



RE-INVENTING MINING FOR THE ELECTRIFICATION OF EVERYTHING

Corporate Presentation | May 2024

Ivanhoe Electric – US Electric Metals Exploration Company with Significant Technology Platform

- ⚡ Advancing the high-grade underground Santa Cruz Copper Project in Arizona
- ⚡ Proprietary exploration and energy storage technologies
- ⚡ Experienced exploration team focused on portfolio of US electric metals projects
- ⚡ Operator of 50-50 exploration joint venture with Saudi Arabian Mining Company, Ma'aden, on expansive underexplored lands on the Arabian Shield
- ⚡ Strong balance sheet provides liquidity to advance portfolio of high-quality projects
- ⚡ Founded by Executive Chairman, Robert Friedland
- ⚡ Experienced executive management team
- ⚡ Well-positioned to benefit from clean energy transition and strong copper market fundamentals

Experienced Executive Management Team



Robert Friedland
Founder, Executive Chairman



Taylor Melvin
President and
Chief Executive Officer



Jordan Neeser
Chief Financial Officer



Quentin Markin
EVP, Business Development
and Strategy Execution



Glen Kuntz
SVP, Mine Development



Graham Boyd
SVP, Exploration



Cassandra Joseph
General Counsel and
Corporate Secretary

Q1 2023

- ⚡ Santa Cruz Resource Update
- ⚡ Ma'aden JV Announced

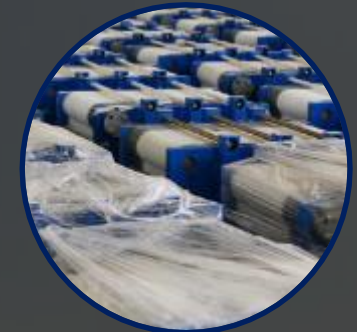
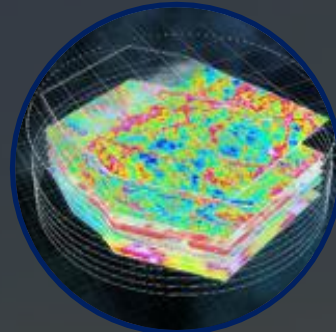
Major Achievements and Milestones

- ⚡ Acquired Santa Cruz Land
- ⚡ Closed and Funded Ma'aden JV
- ⚡ Completed ~84k Meters of Drilling at Santa Cruz Project
- ⚡ Published Santa Cruz Initial Assessment
- ⚡ Raised ~\$200 Million in Follow-on Common Stock Offering, Including Ma'aden Top-up
- ⚡ Successful Drill Results at Santa Cruz – Verde Domain and Texaco Ridge Sulfides
- ⚡ Commenced Typhoon™ Survey in Saudi Arabia, Identifying Initial Drill Targets
- ⚡ Advanced Exploration Drilling at US Projects

Q1 2024+

- ⚡ Entered 2024 with Strong Operational Momentum and Financial Strength
- ⚡ Future Surveys and Drilling in Saudi Arabia
- ⚡ Advancing Santa Cruz PFS
- ⚡ Exploration Drilling in US
- ⚡ Advancing VRB US Business Plan

Proprietary Technology Platforms – Typhoon™, CGI, & VRB



Typhoon™

Computational Geosciences Inc. (CGI)

VRB ENERGY

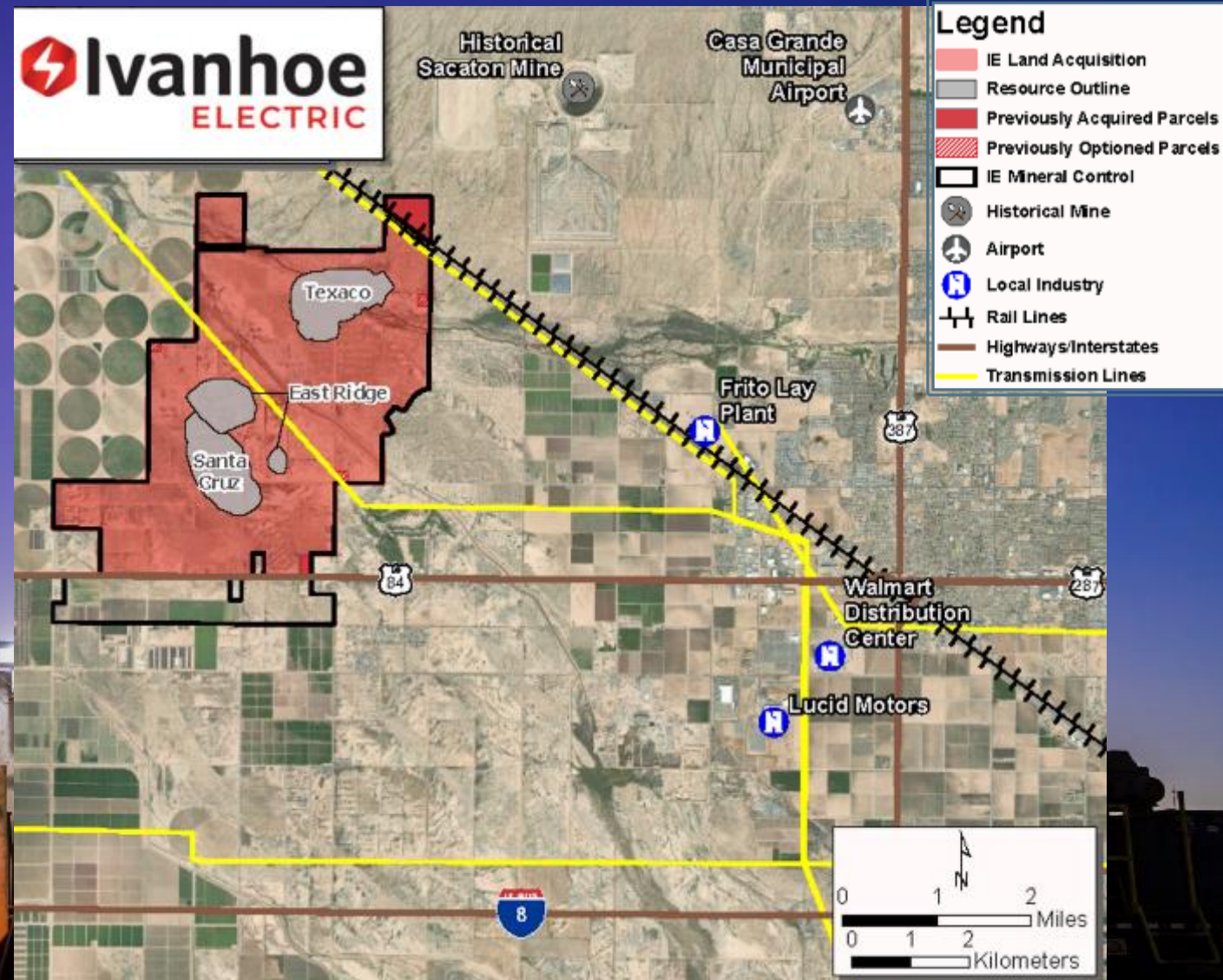
- ⚡ Accurate and powerful proprietary geophysical survey technology based on I-Pulse technology
- ⚡ Successfully used to accelerate the exploration process to lower costs
- ⚡ Potential to discover deposits otherwise thought to be undetectable

- ⚡ Advanced data analytics, geophysical modeling and artificial intelligence for water, oil and minerals discoveries
- ⚡ Only product that can process the full spectrum of geophysical datasets produced by the Typhoon™ system into 3D images

- ⚡ Proven grid-scale proprietary battery technology
- ⚡ Low-cost ion-exchange membrane, long-life electrolyte formulation and innovative flow cell design
- ⚡ Proven commercial-scale product with over 500 MWh installed or in development

Santa Cruz Project High-Grade Copper Resource Entirely on Private Land in Arizona

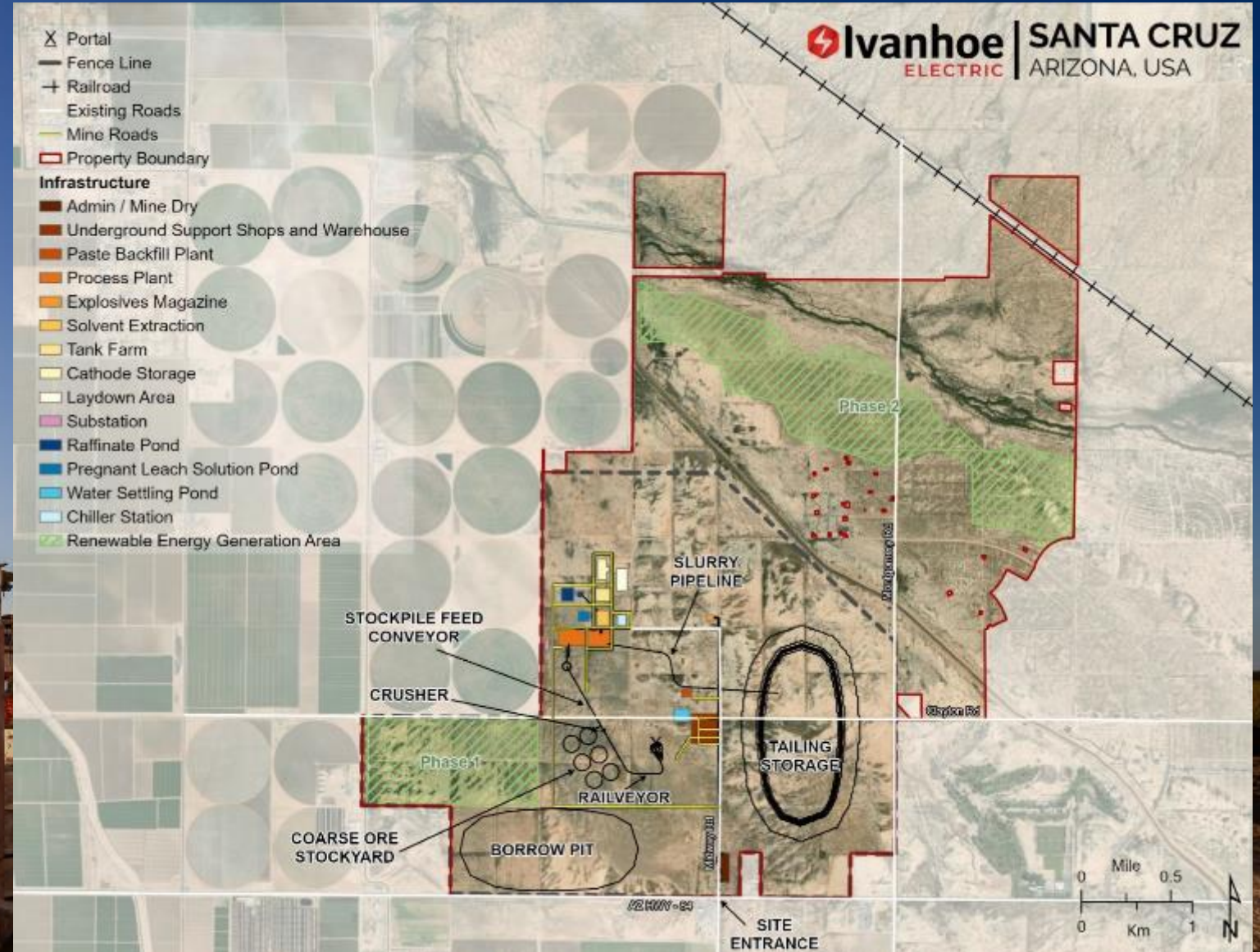
- ⚡ 4.7 Mt contained resource at average grade of 1.24% copper
- ⚡ 5,975 acres of private land encompassing the entire project
- ⚡ Acquired land includes associated water rights
- ⚡ Ivanhoe Electric controls all mineral titles contiguous with surface land
- ⚡ Project has excellent access to existing infrastructure including rail, highways and electric transmission lines
- ⚡ Located just west of Casa Grande, Arizona, a growing industrial corridor



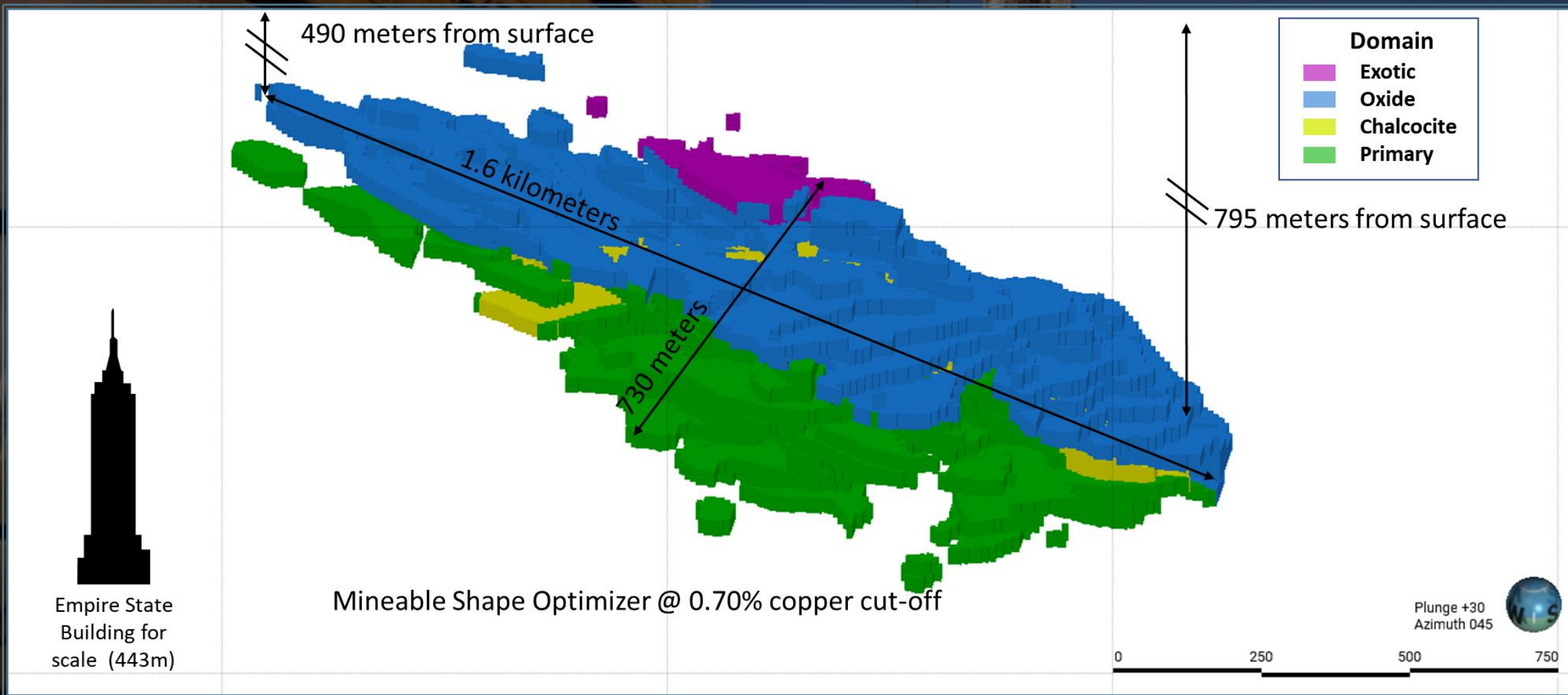
Santa Cruz Project

Modern Underground Mining Project with Small Surface Footprint

- ⚡ Current project design requires ~1/3 of land package
 - Mine access, processing and tailings storage facilities
- ⚡ Incorporates modern mining technologies to reduce operating costs and carbon dioxide emissions
- ⚡ Includes provision for on-site solar power to supply up to 70% of Project's electricity demand



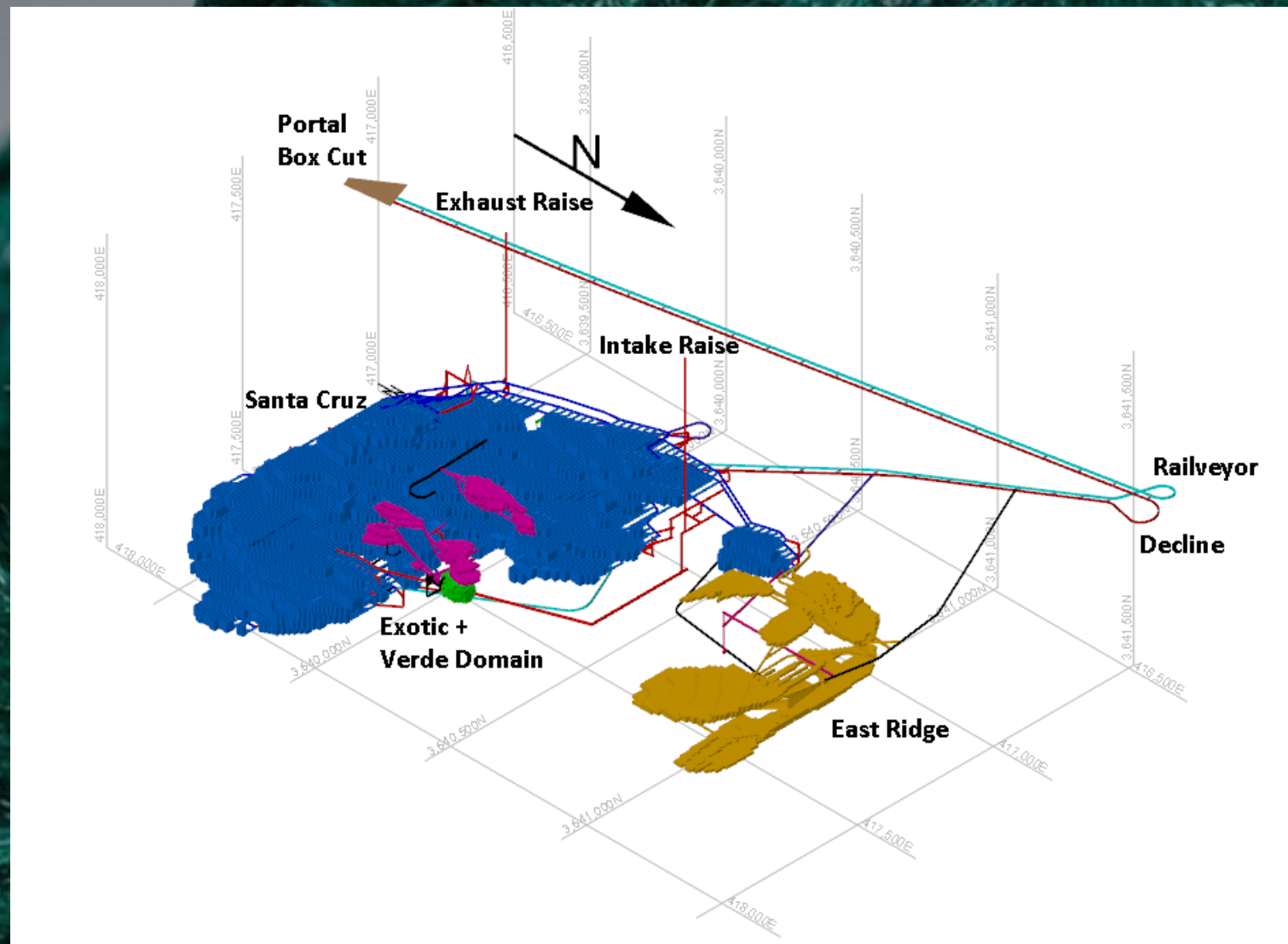
Santa Cruz Initial Assessment: Focused on High-Grade Oxide and Chalcocite Zones



Santa Cruz Initial Assessment (“IA”) – September 2023

- ⚡ IA focuses on 5.9 Mt / year underground copper mine with small surface footprint
 - IA only incorporates high-grade exotic, oxide and enriched domains contained in Santa Cruz and East Ridge Deposits
- ⚡ Estimated copper production of 1.6 Mt over 20-year mine life (“LOM”)
 - ~1.0 Mt pure copper cathode via onsite SX/EW
 - ~0.6 Mt copper in concentrate that is 48% copper by weight
- ⚡ Initial project capital estimated at \$1.15 BN, \$980 MM in LOM sustaining capital
- ⚡ Low estimated capital intensity of ~\$14k / tonne annual copper production
- ⚡ Estimated LOM C1 cash costs of \$1.36/lb Cu
- ⚡ After-tax NPV_{8%} of \$1.32 BN and IRR of 23.0% at \$3.80/lb Cu
- ⚡ IA contemplates 70% renewable energy, resulting in low estimated Scope 1 and 2 emissions of 0.49 t CO₂e/t Cu produced

Phased Development Approach Minimizes Initial Capital Requirements



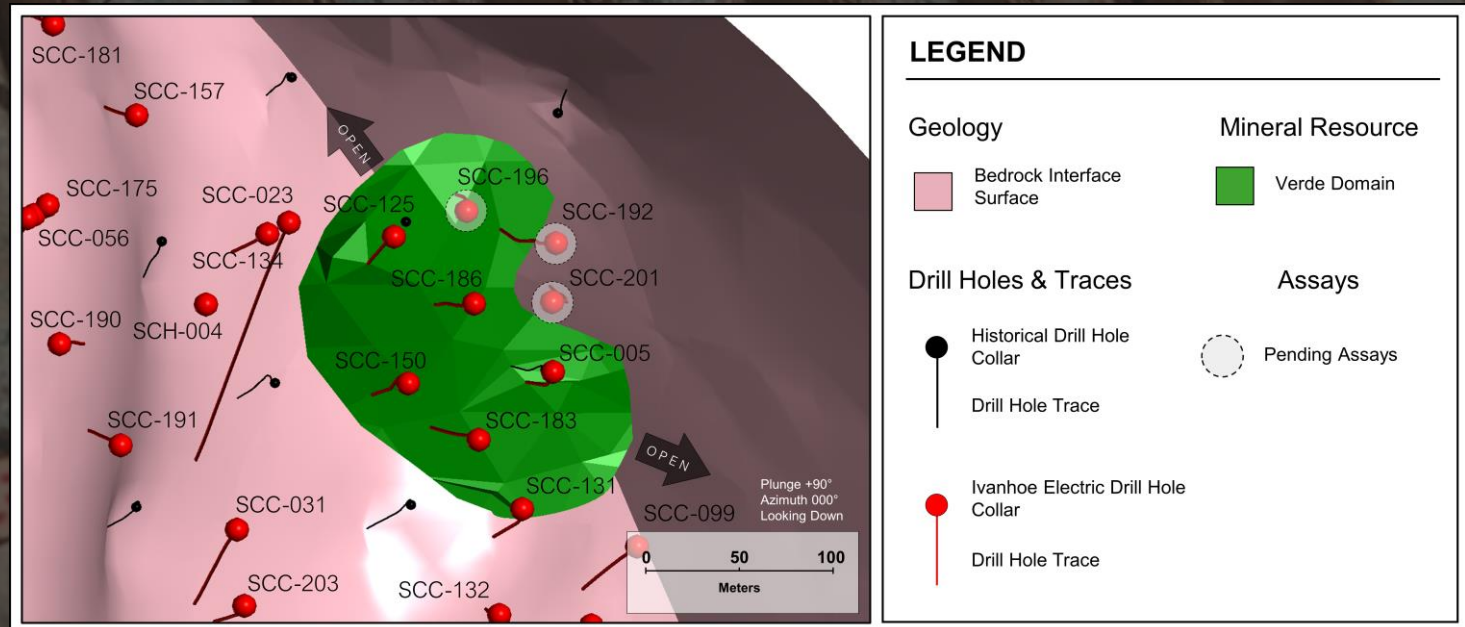
- ⚡ Initial Assessment focuses on high-grade, oxide and soluble copper domains
- ⚡ Study includes twin 4.3 km declines to access copper mineralization
 - ~2 km extension in Year 8 to access lower portion of mineralization
- ⚡ LOM 105.2 Mt mineralized material mined at 1.58% copper
 - Santa Cruz: 88.6 Mt at 1.60% copper
 - Santa Cruz Exotic: 1.9 Mt at 2.66% copper, excluding recent drilling at Verde Domain
- ⚡ Standard longhole stoping and drift and fill methods with paste backfill for support

Santa Cruz Verde Domain – High-Grade Oxide Copper

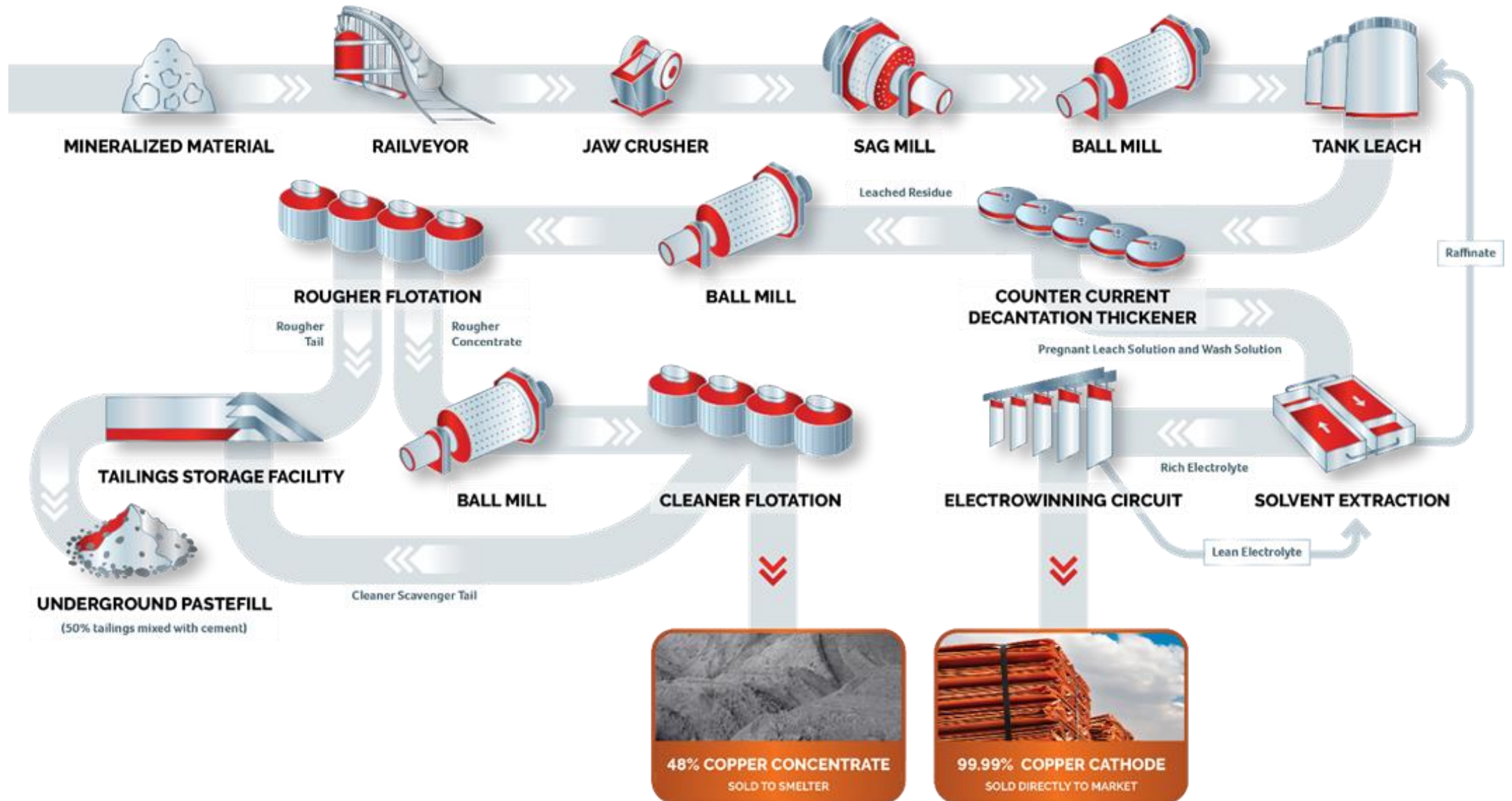
⚡ The Verde Domain has higher copper grades and lower water flow rates compared to previous modeling within the Initial Assessment

- SCC-005 57.0 meters @ 3.52% Total Copper (2.77% Total Soluble Copper)
- SCC-125 56.6 meters @ 3.22% Total Copper (3.16% Total Soluble Copper)
- SCC-150 6.43 meters @ 5.99% Total Copper (5.90% Total Soluble Copper)
- SCC-183 19.81 meters @ 2.64% Total Copper (2.66% Total Soluble Copper)
- SCC-186 59.30 meters @ 2.60% Total Copper (2.67% Total Soluble Copper)

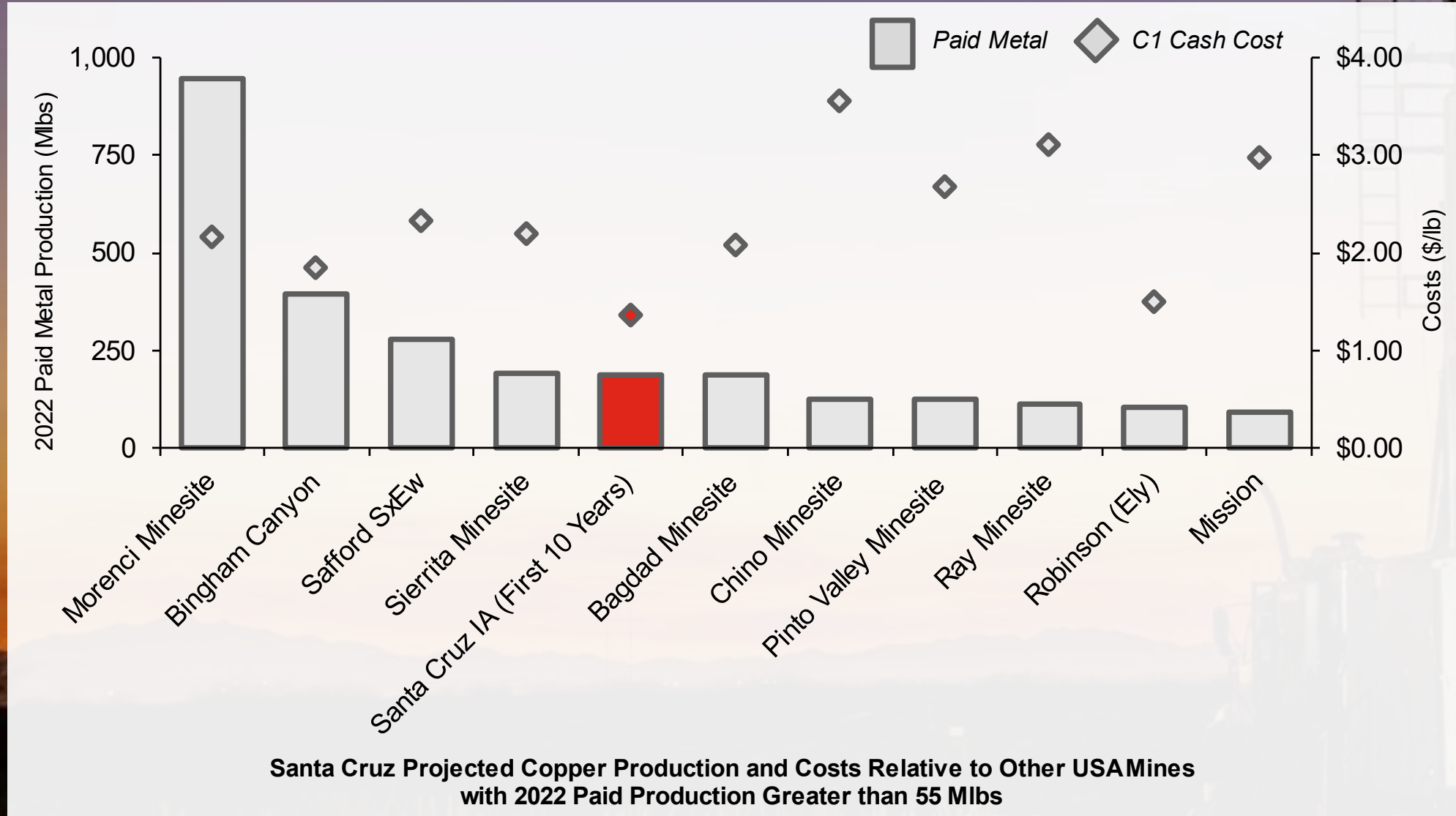
⚡ Provides upside potential to the project economics presented in the Initial Assessment



Initial Assessment Processing Flowsheet Production of Both Copper Cathode and Copper Concentrate



Santa Cruz IA: Potential to be a Significant Copper Producer in the US with Low Estimated Operating Costs

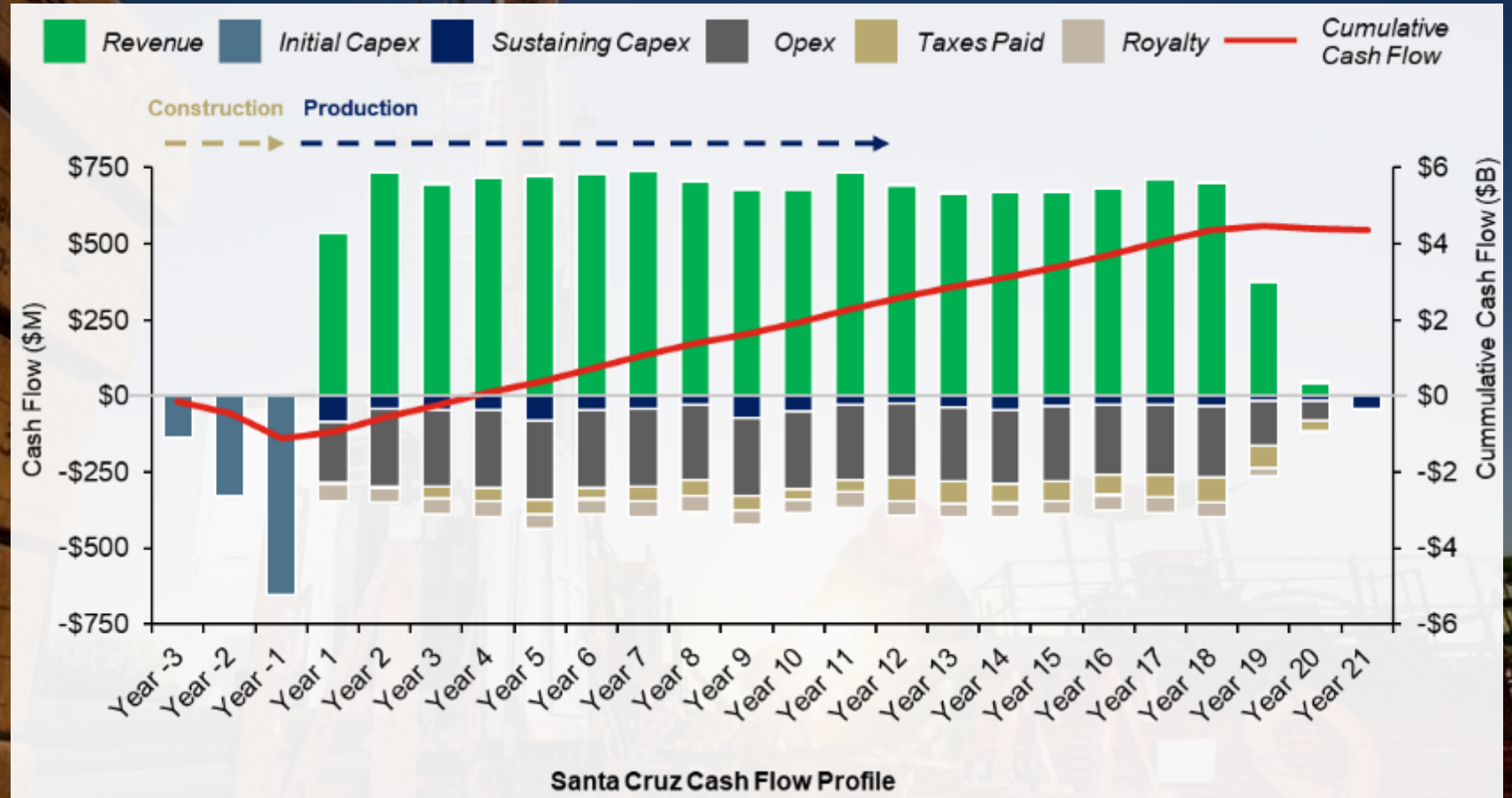


Santa Cruz Initial Assessment

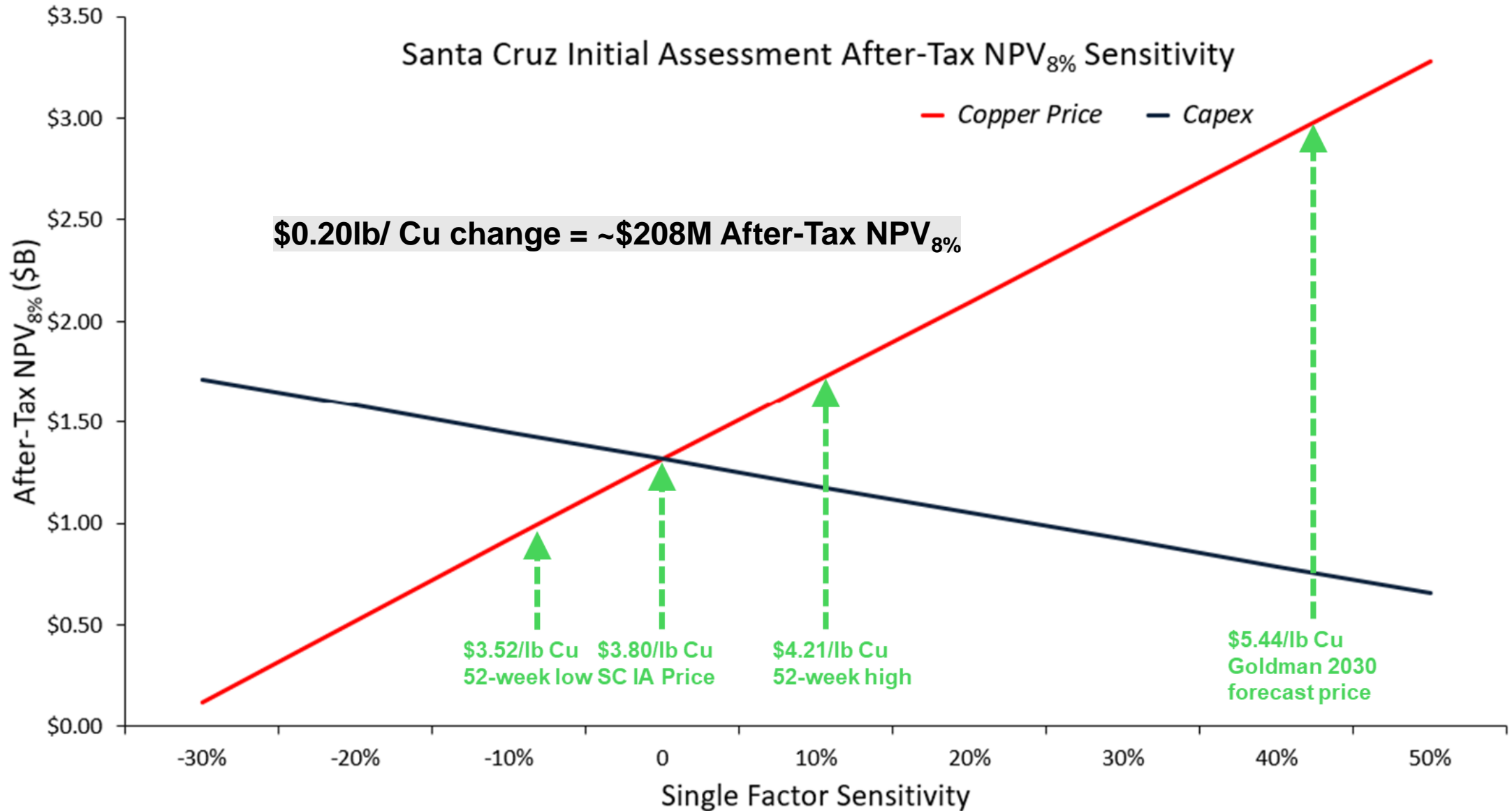
Strong Projected Economics at \$3.80/lb Copper

IA Estimates

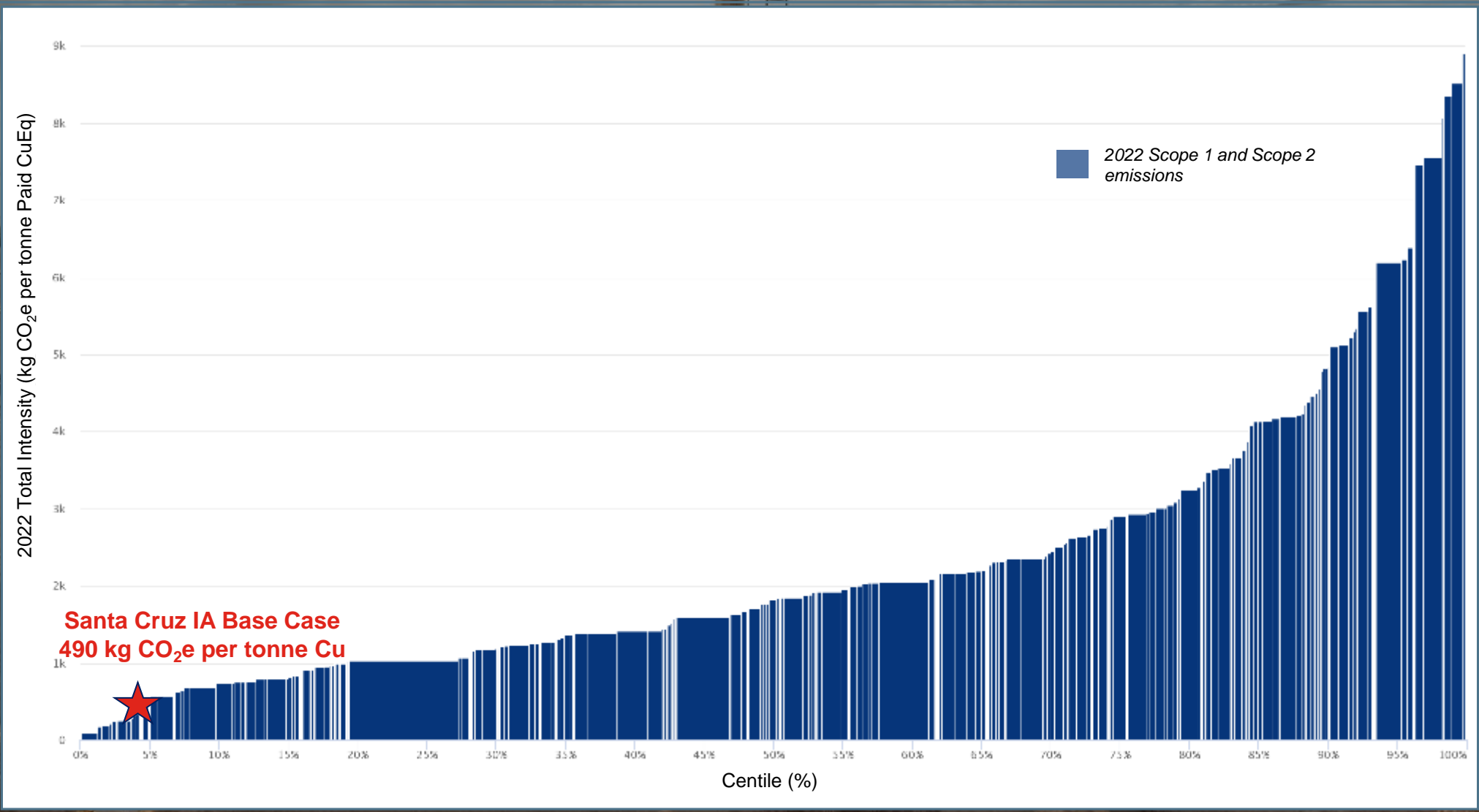
- ⚡ Initial capex \$1.15B, LOM sustaining capex \$0.98B
- ⚡ \$12.9B LOM revenue
- ⚡ \$5.2B LOM Pre-tax Free Cash Flow
- ⚡ \$1.6B Pre-tax NPV_{8%}, IRR 25.1%
- ⚡ \$1.3B After-tax NPV_{8%}, IRR 23.0%



Santa Cruz Initial Assessment: Illustrative NPV Sensitivity



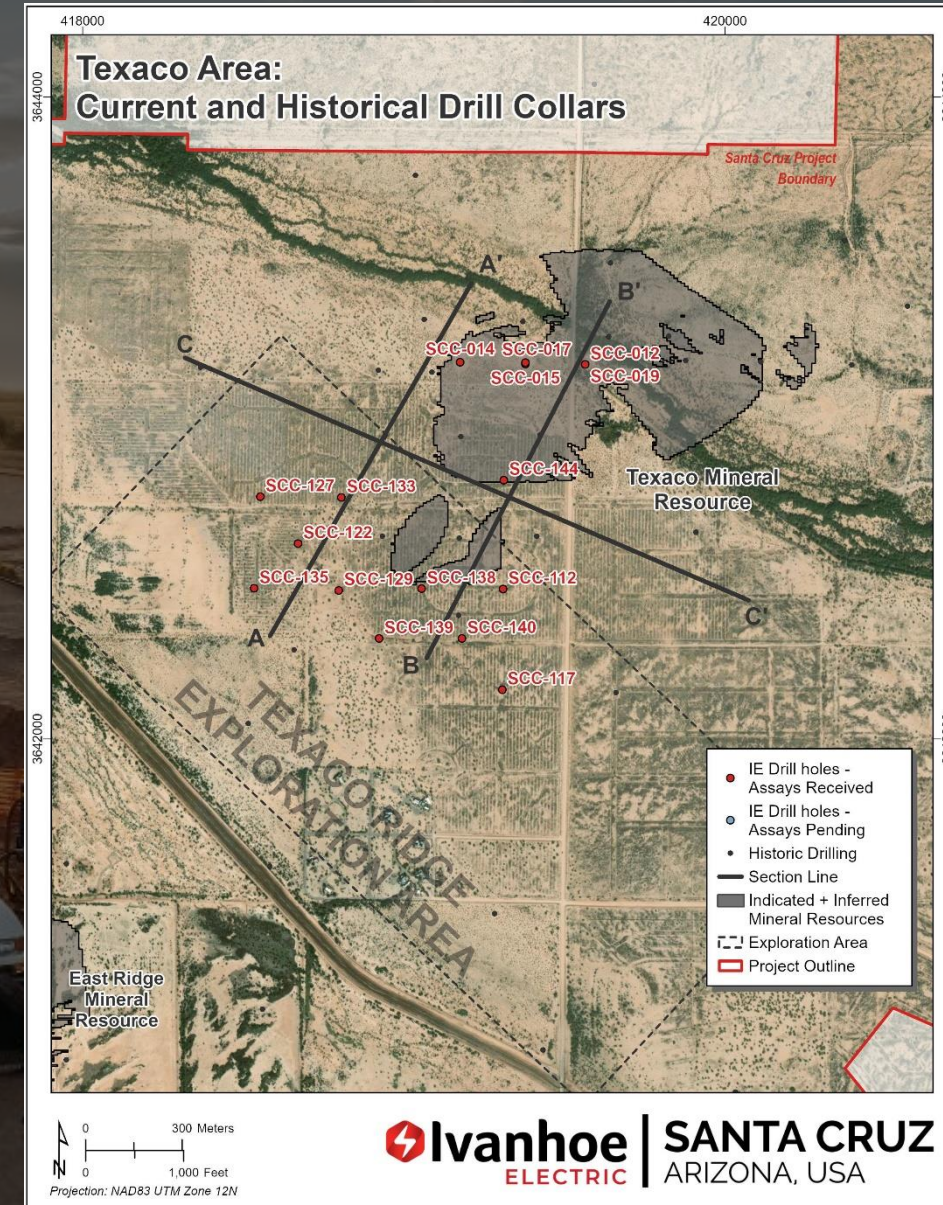
Base Case 70% Renewable Power to Result in Low Estimated CO₂e per Tonne Copper – “Clean Copper”




Source: Wood Mackenzie; 2023 (single year 2022 data shown, the Santa Cruz 2023 IA has not been reviewed by Wood Mackenzie)

Exploration Drilling at Texaco and Texaco Ridge Provides Encouraging Results and Future Growth Potential

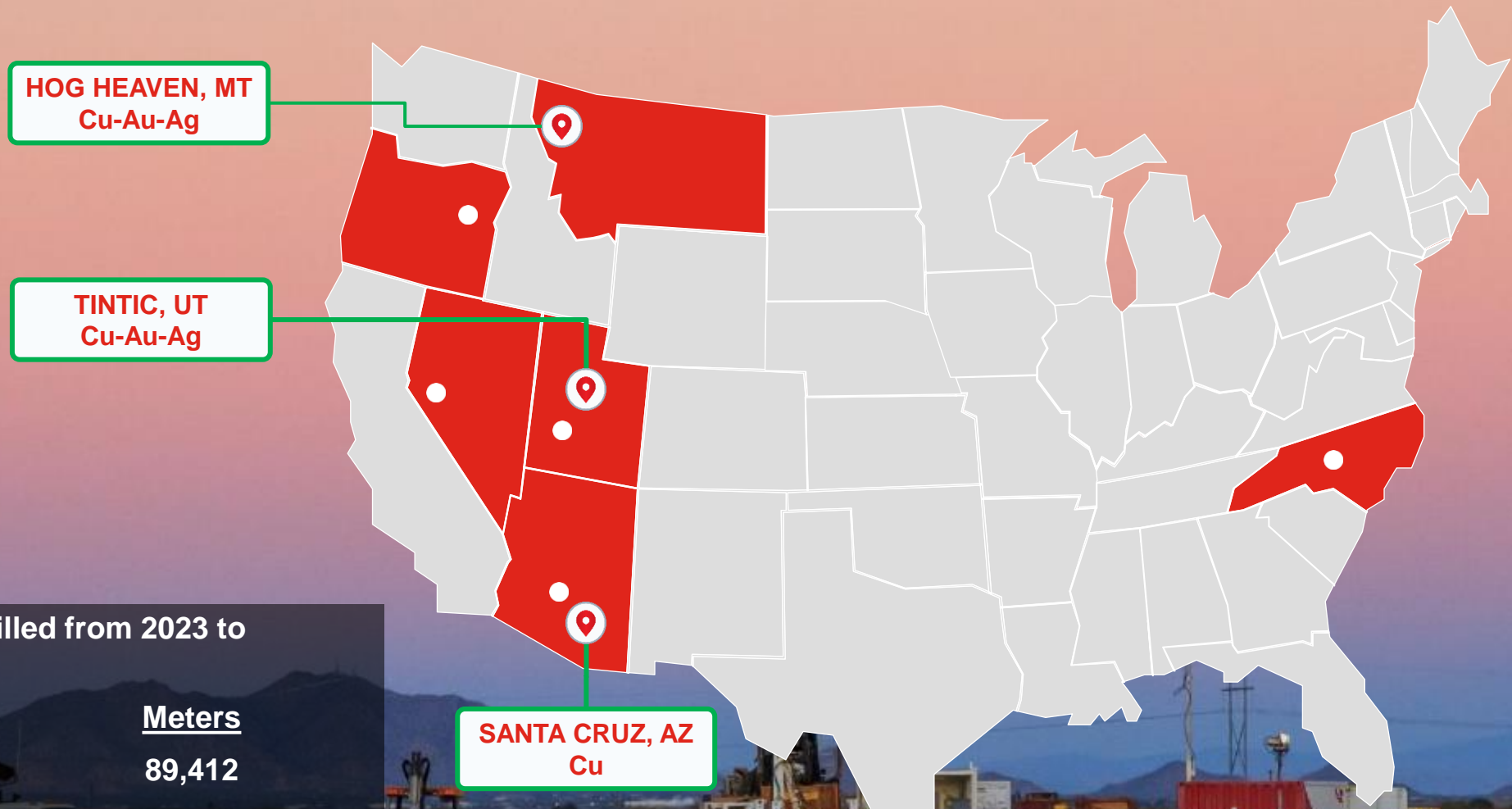
- ⚡ The recent step-out exploration drilling has identified broad primary sulfide mineralization that was previously identified by our Typhoon™ 3D induced polarization survey in September 2022
- ⚡ Hole SCC-122 at Texaco Ridge intersected 327 m @ 0.81% total copper (from 564 m), using a 0.39% total copper cut-off
- ⚡ This intercept includes several zones at the same 0.8% total copper cut-off grade as the nearby Texaco Mineral Resource:
 - a chalcocite zone of 18 m @ 1.65% total copper (from 564 m)
 - a primary sulfide zone of 28 m @ 0.91% total copper (from 604 m)
 - a primary sulfide zone of 49 m @ 0.86% total copper (from 682 m)
 - a primary sulfide zone of 63 m @ 0.89% total copper (from 797 m)



Preliminary Feasibility Study Expected to be Completed by the End of Q2 2025

- 
- ⚡ **Current development drilling is focused on increasing the quality and confidence of the Indicated Mineral Resource to convert a greater portion of resources to Probable Mineral Reserves**
 - ⚡ **Ongoing trade-off studies are focused on identifying opportunities to improve upon the operational and economic results of the September 2023 Initial Assessment**
 - **Trade-off studies include mining methods, paste backfill options, treatment processes, production capacity, mine accessibility, material handling, equipment and other operating characteristics**
 - ⚡ **Assessment of alternative tailings technology and methodologies seeking to maximize underground tailings storage**
 - ⚡ **Ongoing assessment of various renewable energy technologies, including geothermal alternatives, aimed at potentially providing 100% of the Project's electricity needs**

US-Focused Portfolio Provides Exposure to Major Discovery Potential



Total meters drilled from 2023 to Q1 2024

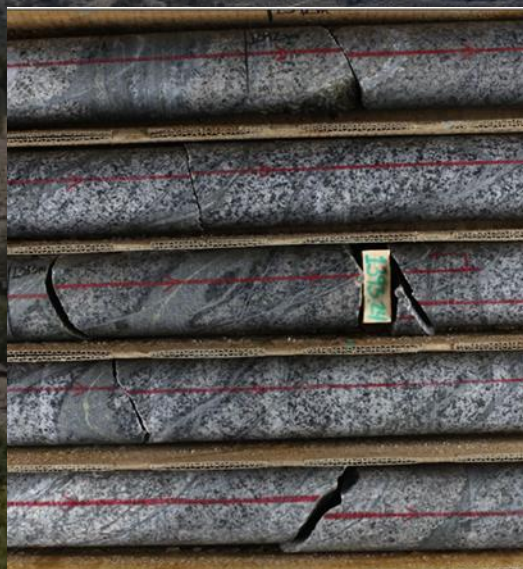
Project	Meters
Santa Cruz	89,412
Tintic	13,111
Hog Heaven	13,110
Other projects	8,901
TOTAL	124,534

Tintic – Technology Enabled Exploration in a Historic Mining District

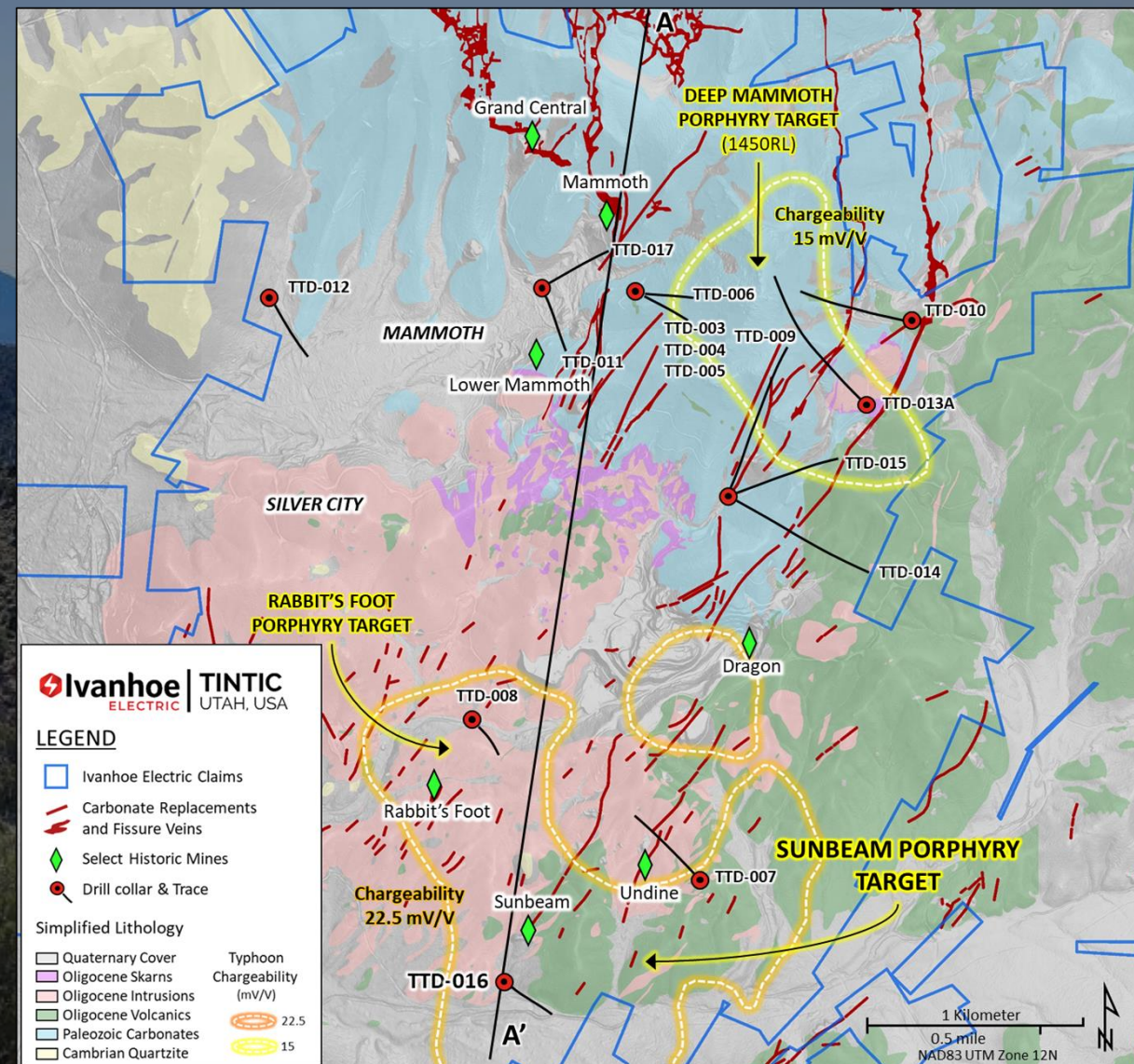
- ⚡ Located on private land in a historic mining district, 60km south of Bingham Canyon, with similar geologic characteristics
- ⚡ Drilling ongoing: 11 holes totaling over 11k meters
Program continues in 2024 with one active drill rig in the winter
- ⚡ Exploration drilling highlights:
 - Intersected a porphyry system at Typhoon™ target
 - Drill hole TTD-016 hit over 600 meters of stockwork veining and sulfides at Sunbeam
 - Established key controls on porphyry mineralization for district
 - Drilling has moved to test below the most significant mines in the district



Typhoon™ Survey Guides Ongoing Exploration for Large Porphyry Systems

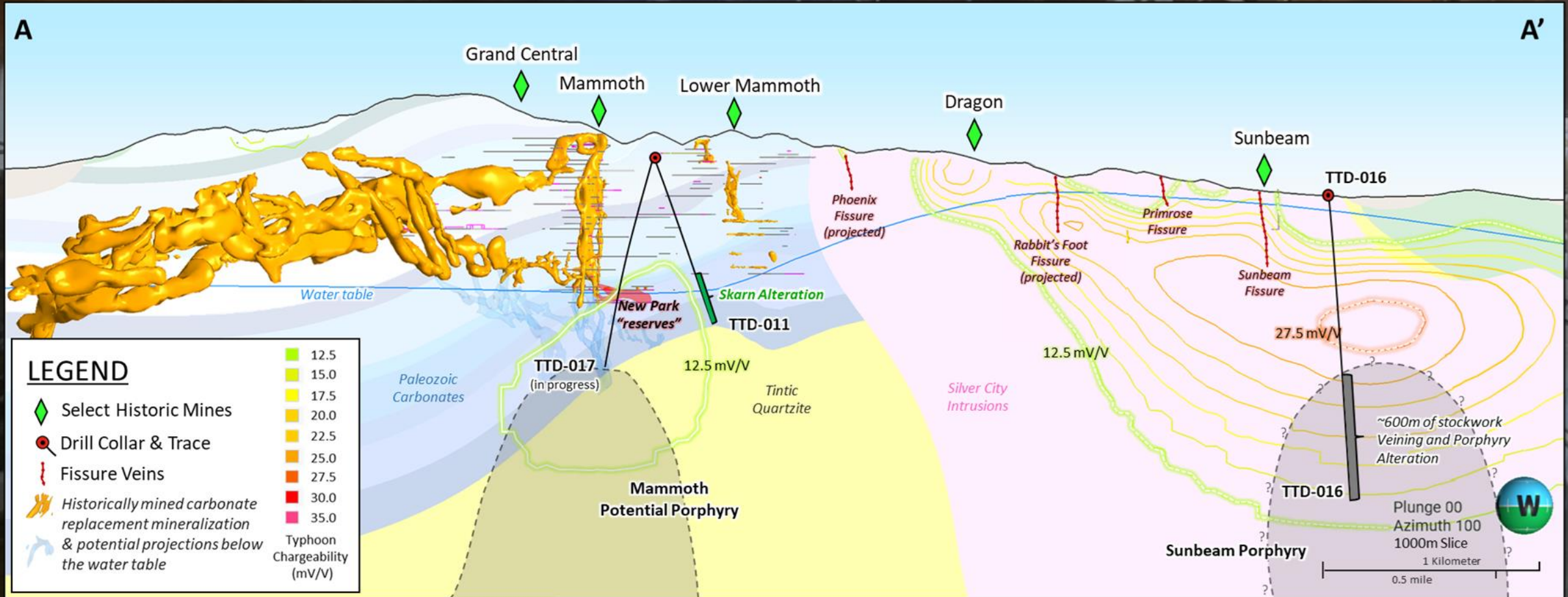


TTD-016: 1391 to 1394m strong sulfide mineralization in vein stockworks



Exploration Drilling Finds Porphyry System at Sunbeam

Historical mining stopped at the water table, but mineralization is believed to continue to depth



Hog Heaven - Potential High-Grade Extensions and Porphyry Source

- ⚡ The Hog Heaven district consists of several high-sulfidation epithermal mineral deposits and prospects as well as several now-closed mines, including the Flathead Mine
- ⚡ Historic Flathead Mine produced high-grade silver with associated lead, zinc, copper and gold and is open at depth
- ⚡ Drilling underway on private land to search for porphyry copper mineralization



Hog Heaven – Drilling Continues to Expand Mineralized Areas

- ⚡ Drilling at Hog Heaven continues to step out in search of the porphyry source
- ⚡ Reported best copper-gold-silver intersection to date. Significant thicknesses have been intersected:
 - HHD-014, 82 meters at 0.63% copper, 0.32 g/t gold and 37.8 g/t silver from 568 meters
 - This interval includes some exceptional grades, best represented by a series of enargite-pyrite veins at 5.78% copper, 2.2 g/t gold and 264.7 g/t silver over 3.95 meters from 631 meters
 - The highest single assay in this vein zone returned 21.7% copper, 3.94 g/t gold and 510 g/t silver over 1.1 meters from 632 meters



Ivanhoe Electric & Ma'aden – 50/50 JV to Explore in Saudi Arabia



- ⚡ Exclusive access to explore a vast ~48,500 km² area of the underexplored Arabian Shield in Saudi Arabia
- ⚡ \$147.5 million investment by Ma'aden into Ivanhoe Electric to fund the JV and Ivanhoe Electric's US projects
 - \$66 million to fund the JV, including \$13 million to build 3 new generation Typhoon™ units
- ⚡ Ma'aden is a 9.8% shareholder in Ivanhoe Electric

Initial Typhoon™ Survey Identifies Three Prospective Chargeability Anomalies for Subsequent Drill Testing

⚡ Three chargeability anomalies have been identified by Typhoon™ on the Umm Ash Shalahib Exploration License to the south of Ma'aden's Al Amar Gold-Copper-Zinc Mine

⚡ The Umm Ash Shalahib Typhoon survey will eventually cover more than 65 km² and is substantially complete

⚡ Exploration drilling on the three currently identified anomalies expected in H1 2024



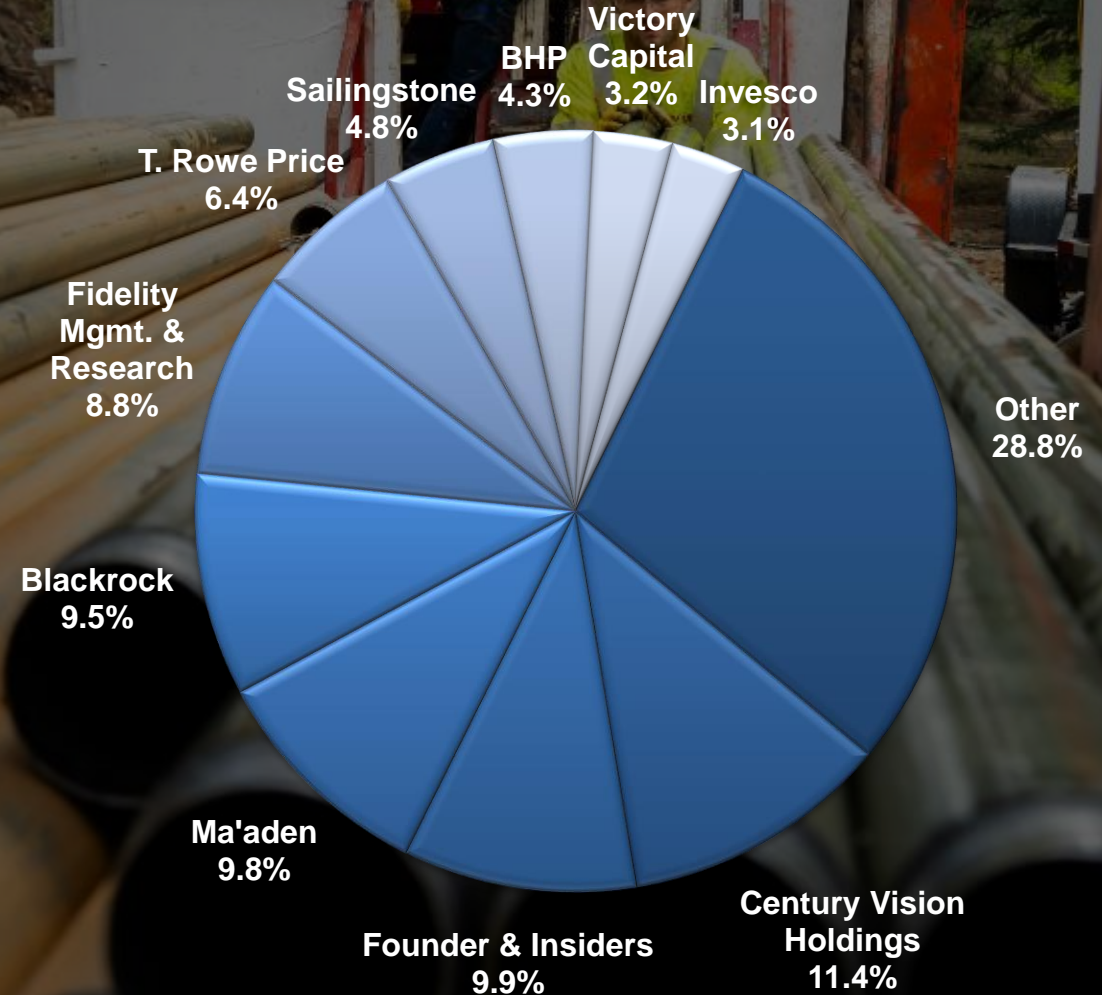
Ivanhoe Electric – Significant Institutional and Insider Ownership

Public Market Overview

- ⚡ Current Market Cap: US\$1.35 billion*
- ⚡ Shares Outstanding: 120,307,414*
- ⚡ Cash as at March 31, 2024: \$179.4 million

* As of May 8, 2024

**Financial Strength to Execute
Business Plan and Advance
Projects**



Ivanhoe Electric – US Electric Metals Exploration Company with Significant Technology Platform

- ⚡ Advancing the high-grade underground Santa Cruz Copper Project in Arizona
- ⚡ Proprietary exploration and energy storage technologies
- ⚡ Experienced exploration team focused on portfolio of US electric metals projects
- ⚡ Operator of 50-50 exploration joint venture with Saudi Arabian Mining Company, Ma'aden, on expansive underexplored lands on the Arabian Shield
- ⚡ Strong balance sheet provides liquidity to advance portfolio of high-quality projects
- ⚡ Founded by Executive Chairman, Robert Friedland
- ⚡ Experienced executive management team
- ⚡ Well-positioned to benefit from clean energy transition and strong copper market fundamentals

Forward-Looking Statements

Certain statements in this presentation constitute “forward-looking statements” or “forward-looking information” within the meaning of applicable US and Canadian securities laws. Such statements and information involve known and unknown risks, uncertainties and other factors that may cause the actual results, performance or achievements of the company, its projects, or industry results to be materially different from any future results, performance or achievements expressed or implied by such forward-looking statements or information. Such statements can be identified by the use of words such as “may”, “would”, “could”, “will”, “intend”, “expect”, “believe”, “plan”, “anticipate”, “estimate”, “scheduled”, “forecast”, “predict” and other similar terminology, or state that certain actions, events or results “may”, “could”, “would”, “might” or “will” be taken, occur or be achieved. These statements reflect the company’s current expectations regarding future events, performance and results and speak only as of the date of this news release.

Such statements in this presentation include, without limitation: the projections, assumptions and estimates contained in the Initial Assessment related to the Santa Cruz Project, including, without limitation, those relating to exploration, development, capital and operating costs, production, grade, recoveries, metal prices, life of mine, mine sequencing, NPV, IRR, payback, mine design, mining techniques and processes, equipment, staffing, emissions, use of land, estimates of mineral resources, use of energy storage technologies; use of renewable energy; the acquisition of all mineral titles; the advancement of the Santa Cruz Project Prefeasibility Study; the potential for improved mining methods, mining rates, and metallurgical recovery compared to what was modeled for the Verde Domain in the Initial Assessment; the upside potential for the Santa Cruz Project economics; the ability to convert a greater portion of resources to probable mineral reserves as part of the Prefeasibility Study for the Santa Cruz Project; the functioning of our technology; the potential of Typhoon™ to discover undetectable deposits; the ongoing exploration drilling and potential mineral discoveries at the Tintic and Hog Heaven Projects; the continued use of Typhoon™ at Umm Ash Shalahib; the timing and expected completion of exploration drilling on identified anomalies at Umm Ash Shalahib; our ability to accelerate and de-risk the mineral exploration process; beneficial US energy transition; potential copper supply squeeze; potential new discoveries and planned or potential developments in the businesses of Ivanhoe Electric.

Forward-looking statements are based on management’s beliefs and assumptions and on information currently available to management. Such statements are subject to significant risks and uncertainties, and actual results may differ materially from those expressed or implied in the forward-looking statements due to various factors, including we have no mineral reserves, other than at the San Matias project; we have inferred resources that may never be upgraded to a higher category of resource or reserve; we have a limited operating history on which to base an evaluation of our business and prospects; we depend on our material projects for our future operations; our mineral resource calculations at the Santa Cruz Project are only estimates; actual capital costs, operating costs, production and economic returns may differ significantly from those we have anticipated; the title to some of the mineral properties may be uncertain or

defective; our business is subject to changes in the prices of copper, gold, silver, nickel, cobalt, vanadium and platinum group metals; we have claims and legal proceedings against one of our subsidiaries; our business is subject to significant risk and hazards associated with exploration activities, mine development, construction and future mining operations; we may fail to identify attractive acquisition candidates or joint ventures with strategic partners or be unable to successfully integrate acquired mineral properties or successfully manage joint ventures; our success is dependent in part on our joint venture partners and their compliance with our agreements with them; our business is extensively regulated by the United States and foreign governments as well as local governments; the requirements that we obtain, maintain and renew environmental, construction and mining permits are often a costly and time-consuming process; our non-U.S. operations are subject to additional political, economic and other uncertainties not generally associated with domestic operations; and our operations may be impacted by the COVID-19 pandemic, including impacts to the availability of our workforce, government orders that may require temporary suspension of operations, and the global economy. These factors should not be construed as exhaustive and should be read in conjunction with the other cautionary statements and risk factors described in Ivanhoe Electric’s Annual Report on Form 10-K and other documents filed with the SEC.

No assurance can be given that such future results will be achieved. Forward-looking statements speak only as of the date of this presentation. Ivanhoe Electric cautions you not to place undue reliance on these forward-looking statements. Subject to applicable securities laws, the company does not assume any obligation to update or revise the forward-looking statements contained herein to reflect events or circumstances occurring after the date of this presentation, and Ivanhoe Electric expressly disclaims any requirement to do so.

Market and Industry Data

This presentation includes market and industry data and forecasts obtained from independent research reports, publicly available information, various industry publications, other published industry sources or internal data and estimates. Independent research reports, industry publications and other published industry sources generally indicate that the information contained therein was obtained from sources believed to be reliable, but do not guarantee the accuracy and completeness of such information. Although the Company believes that the publications and reports are reliable, the Company has not independently verified the data. Internal data, estimates and forecasts are based on information obtained from trade and business organizations and other contacts in the markets in which we operate and the Company’s understanding of industry conditions. Although the Company believes that such information is reliable, we have not had such information verified by any independent sources. As a result, Recipients of this presentation should be aware that any such information and data set forth in this presentation and estimates and beliefs based on such information and data, are uncertain and may not be reliable.

Scientific and Technical Information

The Initial Assessment (“IA”) is entitled “S-K 1300 Initial Assessment & Technical Report Summary, Santa Cruz Project, Arizona”, is dated September 6, 2023, and was prepared in accordance with Subpart 1300 and Item 601 of Regulation S-K. The IA was prepared by the following firms: SRK Consulting (U.S.), Inc. (SRK), Nordmin Engineering, Ltd. (Nordmin), M3 Engineering and Technology Corp. (M3), Met Engineering, LLC (Met Engineering), Call & Nicholas, Inc. (CNI), INTERA Incorporated (INTERA), KCB Consultants Ltd. (KCB), Tetra Tech, Inc. (Tetra Tech), Life Cycle Geo, LLC (LCG), and Haley & Aldrich, Inc. (H&A).

The IA is preliminary in nature and includes an economic analysis that is based, in part, on inferred mineral resources that are considered too speculative geologically to have the economic considerations applied to them that would enable the inferred mineral resources to be categorized as mineral reserves. Mineral resources are not mineral reserves and do not have demonstrated economic viability. Accordingly, there is no certainty that the results of the IA will be realized.

The IA contains economic analyses which include and exclude inferred mineral resources. This presentation focuses on the economic analysis including inferred mineral resources. For more information regarding the economic analysis without inferred mineral resources, see the IA, which is available on the SEC’s EDGAR website as an exhibit to a Form 8-K filed by the Company in connection with the September 6, 2023 announcement.

Other disclosures of a scientific or technical nature included in this presentation have been reviewed, verified, and approved by Glen Kuntz, P.Geol., a Qualified Person as defined by Regulation S-K, Subpart 1300 promulgated by the U.S. Securities and Exchange Commission and by Canadian National Instrument 43-101. Mr. Kuntz is an employee of Ivanhoe Electric.

Ivanhoe Electric will have prepared and filed a corresponding technical report prepared under Canadian National Instrument 43-101 within 45 days of the September 6, 2023 news release. This report will be available on the company’s website and on the company’s SEDAR+ profile.

For the purposes of Canadian National Instrument 43-101, the independent Qualified Persons responsible for preparing the scientific and technical information disclosed in the September 6, 2023 news release are Anton Chan (SRK); Matt Sullivan (SRK); Joanna Poeck (SRK); Christian Ballard (Nordmin); Laurie Tahija (M3); John Woodson (M3); Jim Moore (Met Engineering); Rob Cook (CNI); Jim Casey (KCB); Annelia Tinklenberg (INTERA); Daryl Longwell (Tetra Tech); Tom Meuzelaar (LCG); and Eric Mears (H&A). Each Qualified Person has reviewed and approved the information in the September 6, 2023 news release, which is incorporated by reference into the Prospectus, relevant to the portion of the scientific and technical information for which they are responsible.

The technical report summary and technical report include relevant information regarding the assumptions, parameters and methods of the mineral resource estimates on the Santa Cruz Project, as well as information regarding data verification, exploration procedures and other matters relevant to the scientific and technical disclosure contained in this presentation.

Disclosures of a scientific or technical nature included in this presentation pertaining to Ma’aden JV in Saudi Arabia have been reviewed, verified and approved by Charles N. Forster, P.Geol., and Mark Gibson, P.Geol., both who are Qualified Persons as defined by Regulation S-K, Subpart 1300 promulgated by the U.S. Securities and Exchange Commission and by Canadian National Instrument 43-101. Mr. Forster is a Senior Advisor to Ivanhoe Electric and Mr. Gibson is Chief Geophysics Officer of Ivanhoe Electric.



For more information visit
www.IvanhoeElectric.com

